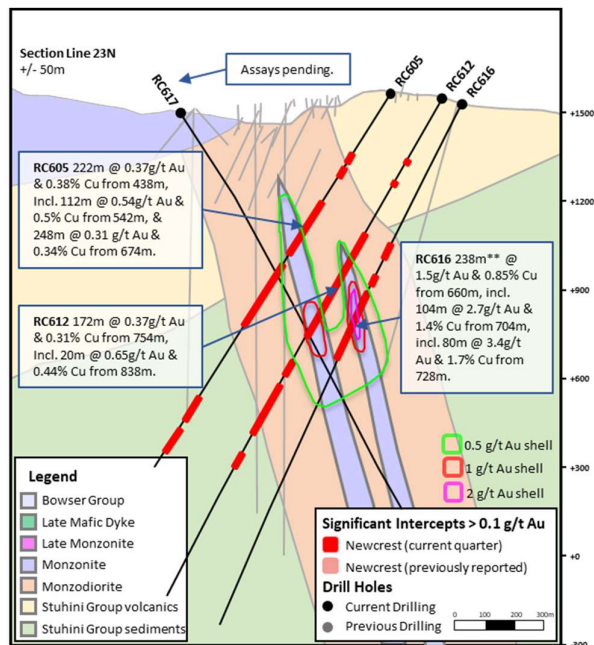
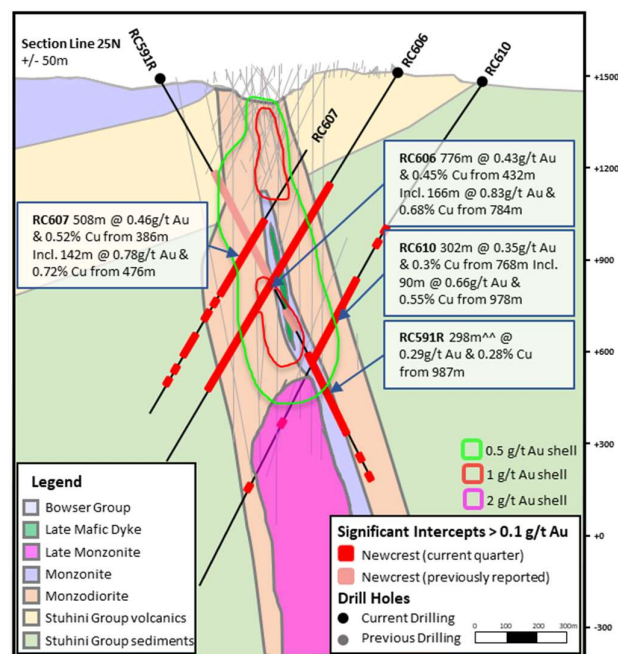


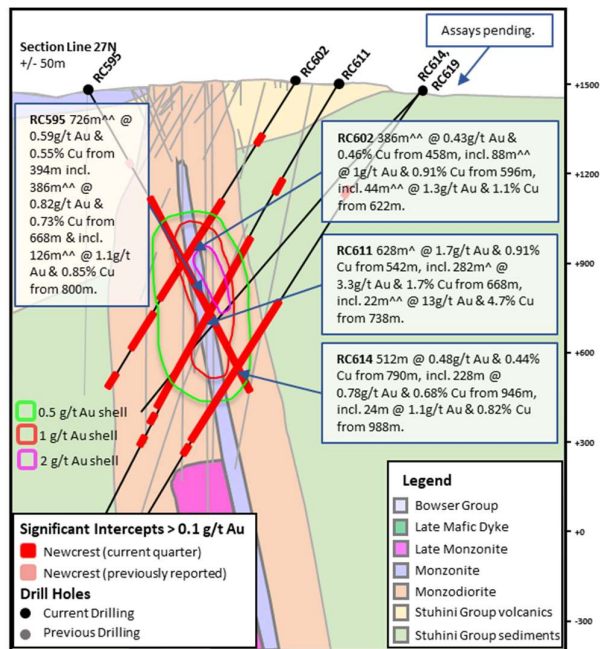
**Figure 1.** Schematic Plan view map showing drill hole locations and significant intercepts (drill intercepts have been reported in Appendix 2 of this report, and in prior Newcrest exploration releases). 1g/t Au, 2 g/t Au, 1 g/t AuEq and 2 g/t AuEq shell projections generated from a Leapfrog model and sliced at 800mRL. Gold Equivalent (AuEq) grade calculated using a copper conversion factor of 1.79 ([gold grade (ppm)] + [copper grade (%) x 1.79]), using USD1300/oz Au, USD3.4lb Cu and 100% recovery.



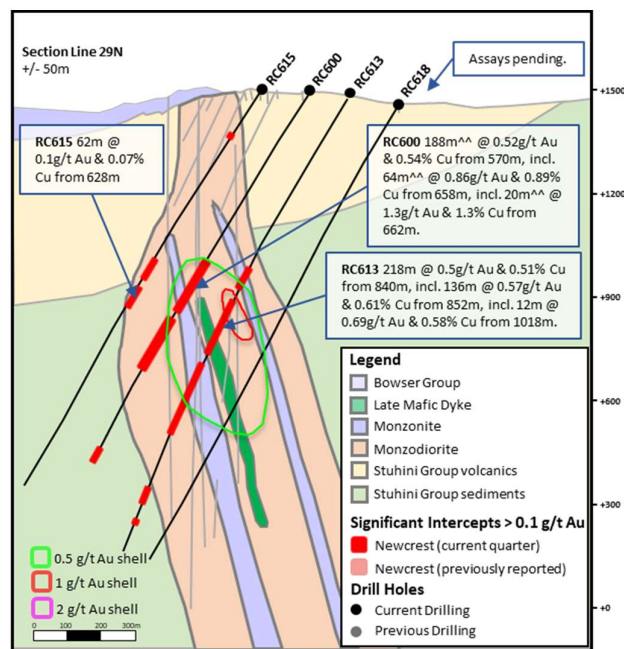
**Figure 2.** Schematic cross section of RC605, RC612, RC616 and RC617 showing drill intercepts (drill intercepts have been reported in Appendix 2 of this report, and in prior Newcrest exploration releases) 0.5, 1.0 and 5g/t Au shell projections generated from Leapfrog model.



**Figure 3.** Schematic cross section of RC591R, RC606, RC607 and RC610 showing drill intercepts (drill intercepts have been reported in Appendix 2 of this report, and in prior Newcrest exploration releases) 0.5, 1.0 and 5g/t Au shell projections generated from Leapfrog model.



**Figure 4.** Schematic cross section of RC595, RC602, RC611 and RC614 showing drill intercepts (drill intercepts have been reported in Appendix 2 of this report, and in prior Newcrest exploration releases) 0.5, 1.0 and 5g/t Au shell projections generated from Leapfrog model.



**Figure 5.** Schematic cross section of RC600, RC613, and RC615 showing drill intercepts (drill intercepts have been reported in Appendix 2 of this report, and in prior Newcrest exploration releases) 0.5, 1.0 and 5g/t Au shell projections generated from leapfrog model.

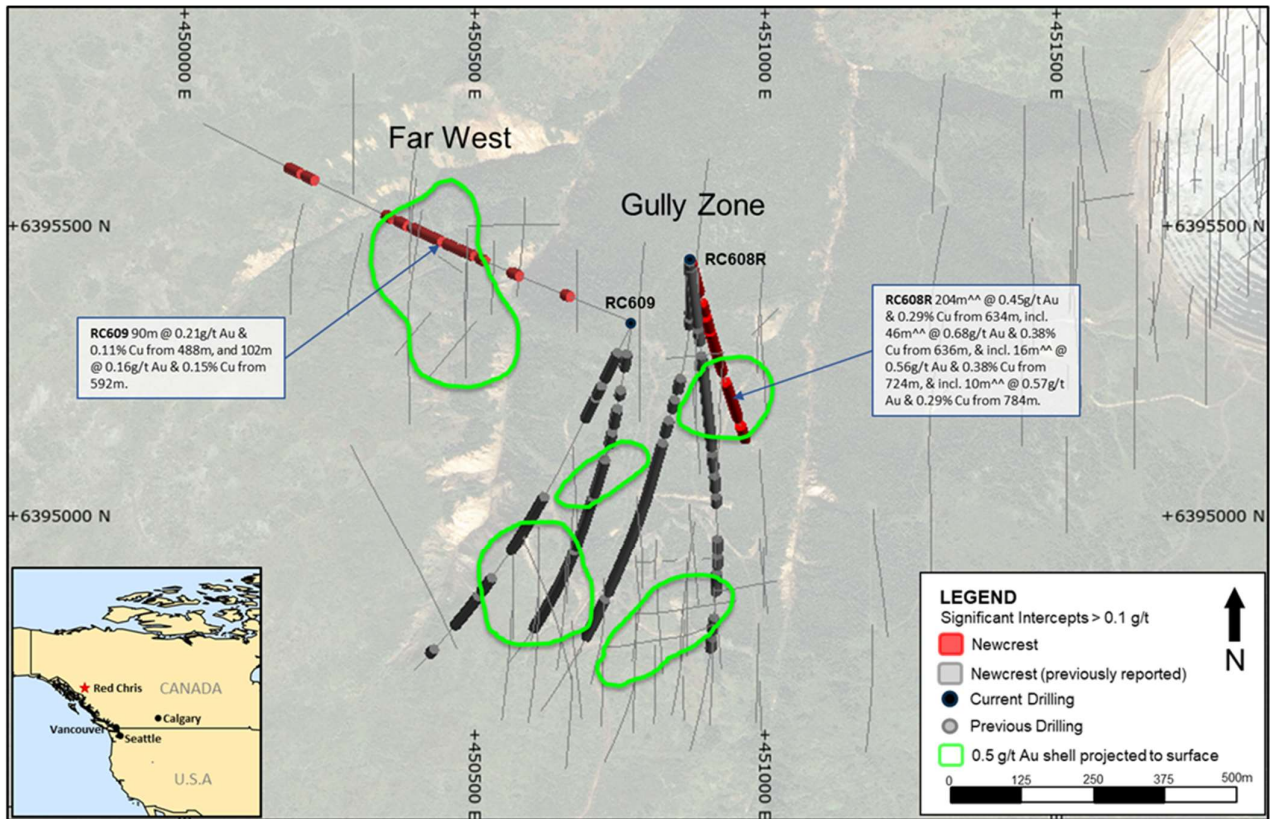


Figure 6. Schematic Plan view map of the Gully Zone, 0.5g/t Au shell projections generated from Leapfrog model.

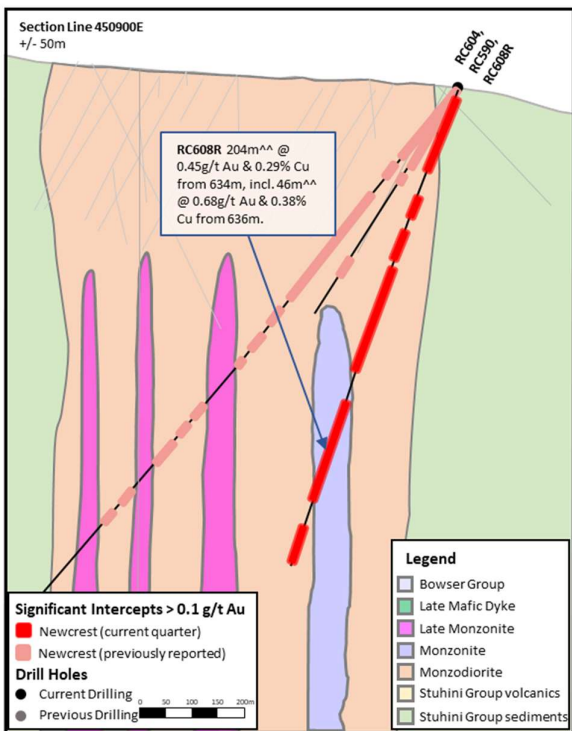


Figure 7. Schematic cross section of RC608R showing drill intercepts (drill intercepts have been reported in Appendix 2 of this report, and in prior Newcrest exploration releases).

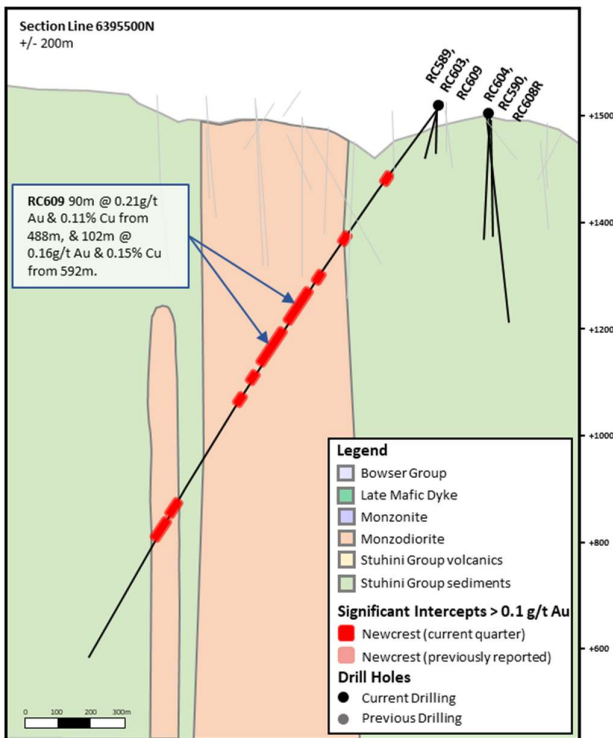
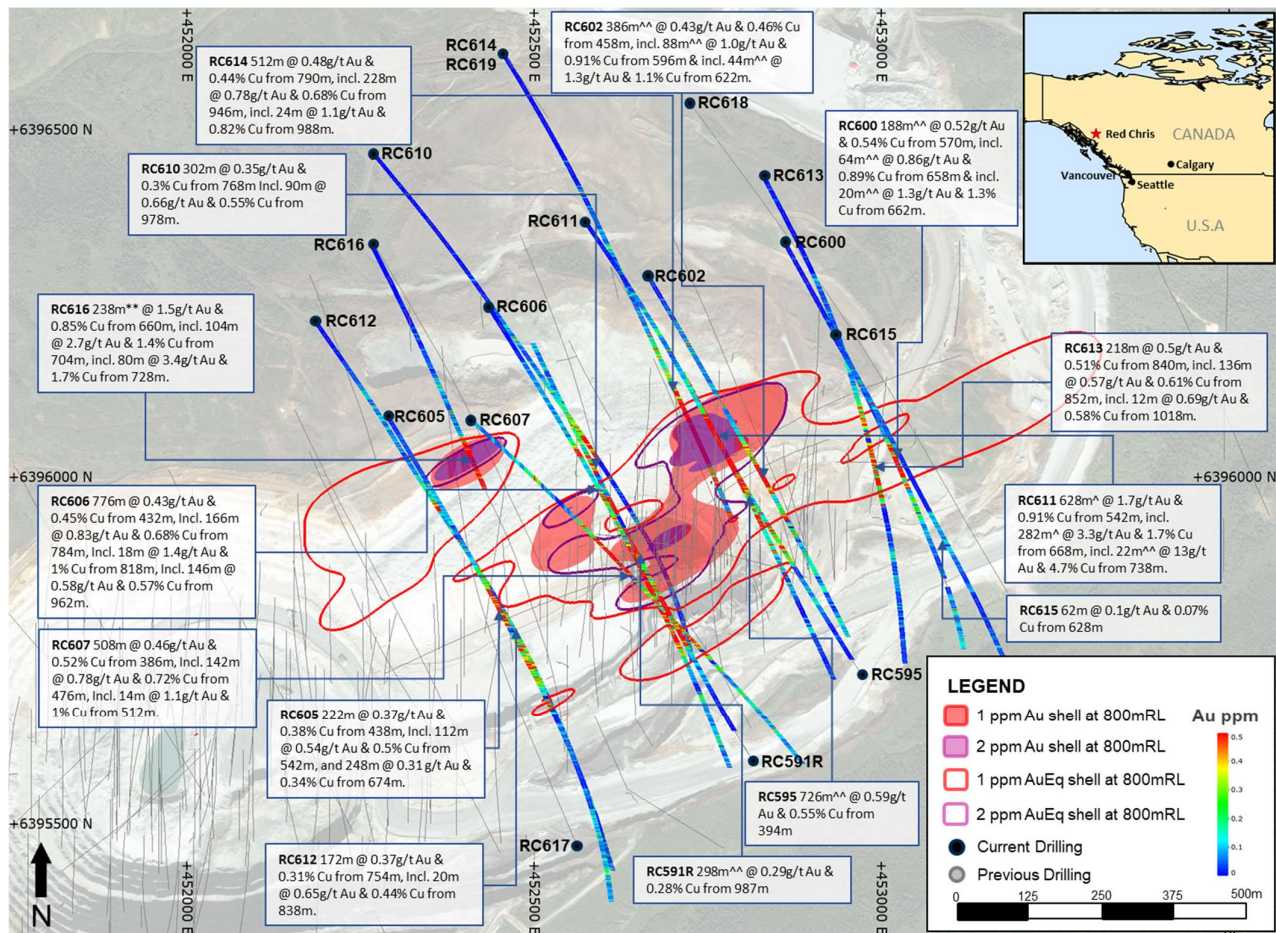


Figure 8. Schematic cross section of RC609 showing drill intercepts (drill intercepts have been reported in Appendix 2 of this report, and in prior Newcrest exploration releases).



**Figure 16:** Schematic Plan view map showing drill hole locations and significant intercepts (drill intercepts have been reported in Appendix 2 of this report, and in prior Newcrest exploration releases). 1g/t Au, 2 g/t Au, 1 g/t AuEq and 2 g/t AuEq shell projections generated from a Leapfrog model and sliced at 800mRL. Gold Equivalent (AuEq) grade calculated using a copper conversion factor of 1.79 ([gold grade (ppm)] + [copper grade (%) x 1.79]), using USD1300/oz Au, USD3.4lb Cu and 100% recovery.